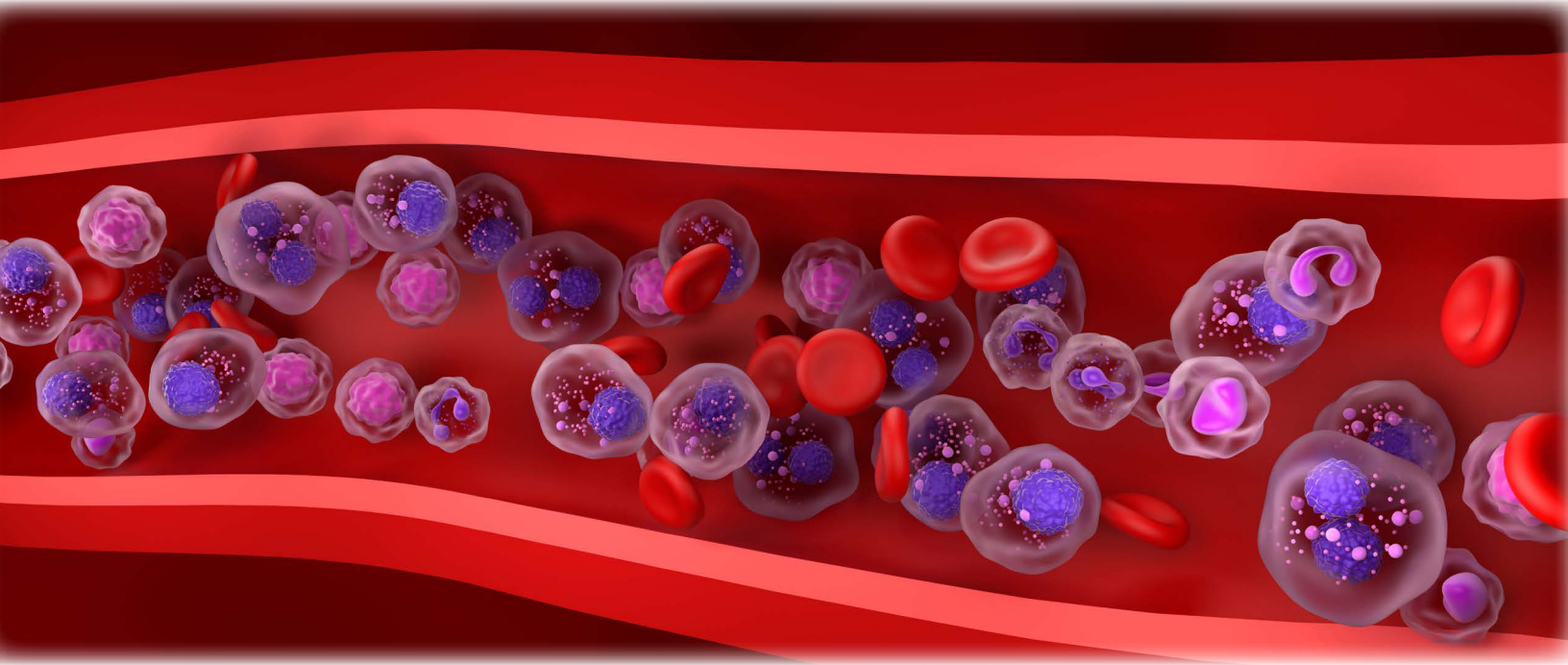


# PSOH ANNUAL MEETING

---

NOVEMBER 15, 2025 | PENN HARRIS HOTEL



## How to Support PSOH

---

**CORPORATE MEMBERSHIP & EXHIBIT OPPORTUNITIES**

**PSOH** | ASCO<sup>®</sup> State/Regional  
Affiliate Program  
Pennsylvania Society of Oncology & Hematology

# CORPORATE MEMBERSHIP

The Pennsylvania Society of Oncology and Hematology (PSOH) invites companies to become annual Corporate Members of the Society. Corporate membership allows corporations to participate in educational and advocacy activities of PSOH, and to promote scientific inquiry and exchange among members.

---

## \$10,000 BENEFITS

- Exclusive Networking Event with PSOH Board to include up to three representatives
- First choice of one exhibit table placement and participation for four representatives at 2025 Annual Meeting
- Company profile on PSOH website to include logo, representative contact information, company description, website, and social media links through December 31, 2025
- Work with legislative initiatives
- Opportunity to survey members (based on Board approval)
- Distribution of priority company information on FDA/NCCN approvals and/or published journal articles to active members (based on Board approval)
- Posting of FDA/NCCN approvals on website
- Included in event promotion email
- Scrolling company logo on the PSOH website footer with link to company website

---

## \$5,000 BENEFITS

- One exhibit table placement selection before general exhibitor assignments, and participation for three representatives at 2025 Annual Meeting
- Company profile on PSOH website to include logo, representative contact information, company description, website, and social media links through October 31, 2025
- Work with legislative initiatives
- Opportunity to survey members (based on Board approval)—**once per year**
- Distribution of priority company information (i.e. FDA/NCCN approvals and or published journal articles, based on Board approval) to active members—**three times per year**
- Posting of FDA/NCCN approvals on website

**All corporate memberships will also receive the exhibitor benefits for our 2025 Annual Meeting.** *(The total number of representatives are listed in benefits above. A maximum of 1 additional representative may be purchased for your exhibit table.)*

**Become a Corporate Member!**



# PSOH ANNUAL MEETING

## NOVEMBER 15, 2025 | PENN HARRIS HOTEL

Dear Valued Supporter,

The Pennsylvania Society of Oncology & Hematology (PSOH) would like to invite you to participate at its annual statewide meeting November 15, 2025, at the Penn Harris Hotel, Camp Hill, PA.

The annual meeting is well attended, attracting practicing medical, surgical, and radiation oncologists, hematologists, nurse practitioners, oncology data specialists and other members of the interdisciplinary health care team. We anticipate hosting approximately 75 medical professionals this year. Moreover, the meeting offers those in training a wonderful opportunity to present their research to our attendees.

Our exhibiting package includes:

- (1) 6' or 8' table and two chairs
- (2) complimentary registrations for representatives
- Company name on "Thank You" screen during breaks
- Company name on signage throughout meeting space
- Company name listed in onsite program for attendees
- A permission-based attendee list provided before and after the meeting — *attendees select an "opt-in" check box during registration if they agree to be contacted by exhibitors*

Registration is required to reserve an exhibit table and is available on our website, <https://psoh.joynmeeting.com/v2/>. The exhibit fee is \$3,000. Please make the check payable to Pennsylvania Society of Oncology & Hematology (tax ID 22-2464542) and mail to 400 Winding Creek Blvd., Mechanicsburg, PA 17050.

We hope that your company will join us this year. If you have any questions, please feel free to reach out to PSOH Meeting Manager, Jessica Winger, at [jwinger@pamedsoc.org](mailto:jwinger@pamedsoc.org).

Thank you for your consideration.

Sincerely,  
Steven Cohen, MD  
PSOH President

# 2025 PSOH ANNUAL MEETING

November 15, 2025 ■ Penn Harris Hotel ■ Camp Hill, PA

## OPPORTUNITIES

---

### EXHIBIT TABLE—\$3,000

- (1) 6' or 8' table and two chairs
- (2) complimentary registrations for representatives
- Company name on "Thank You" screen during breaks
- Company name on signage throughout meeting space
- Company name listed in onsite program for attendees
- A permission-based attendee list provided before and after the meeting—(Attendees select an "opt-in" check box during registration if they agree to be contacted by exhibitors.)

---

### BREAK SPONSOR—\$800

*(Two opportunities available—Must be an exhibitor. This sponsorship does not include an exhibit table.)*

- Additional signage at either the AM or PM break
- Recognition during break slide show and during announcements in main session room
- Recognition in program materials

---

### NON-CME PRODUCT THEATER—\$15,000

*(One opportunity available—An exhibit table or corporate membership is not required. The Non-CME Product Theater is offered on a first come, first served basis. Purchasing company must match the theme of the meeting)*

- PSOH will make all arrangements and cover the following expenses: food & beverage, audiovisual, room rental, and setup
- Exclusive audience with meeting attendees during a lunch session to include a non-CME education presentation that matches the meeting's theme
- Presentation length shall not exceed 45 minutes
- Attendees will eat their lunch during the session
- Company to provide promotional content for two email blasts due to Meeting Manager by October 20, 2025

---

### ADDITIONAL EXHIBIT TABLE REPRESENTATIVES—\$300 EACH

*(A maximum of 1 additional representative may be purchased.)*

Questions? Email Jessica Winger, Meeting Manager at [jwinger@pamedsoc.org](mailto:jwinger@pamedsoc.org)

**REGISTER HERE!**

# 2025 PSOH ANNUAL MEETING

November 15, 2025 ■ Penn Harris Hotel ■ Camp Hill, PA

## GENERAL INFORMATION

**PSOH Tax-ID:** 22-2464542

### **Additional Representative:**

Additional representatives cost \$300 each.  
Max of one additional representative.

### **MSL Attendees:**

MSL attendees are welcomed; however there is an expectation that they will not engage in any promotional/commercial activities outside of the exhibiting area where they must be associated with an exhibitor or corporate member through a shared or separate exhibiting table.

### **Exhibit Cancellation Policy:**

Requests for cancellations of exhibit space must be presented to the association in writing. If cancellation occurs on or before October 15, 2025, the exhibitor will receive a full refund, less a 20% administrative fee. If cancellation occurs after October 15, 2025, no refunds shall be due to the exhibitor. An exhibitor who cancels may not transfer or assign an exhibit space to another company.

### **Standards for Integrity and Independence in Accredited Continuing Education**

As a vendor, you will need to understand and agree to follow the policies of the ACCME's Standards for Integrity and Independence in Accredited Continuing Education and the guidelines of the American Medical Association set for physicians in support of the 2025 PSOH Annual Meeting. By accepting the purchase of an exhibit space, the Pennsylvania Society of Oncology & Hematology is in no way endorsing products or services offered by this company.

PAYMENT IS DUE IN FULL ON OR BEFORE  
**Friday, October 31, 2025.**

Checks should be made payable to PSOH and mailed to:

**PSOH**  
**Attn: Jessica Winger**  
**400 Winding Creek Blvd.**  
**Mechanicsburg, PA 17050**

